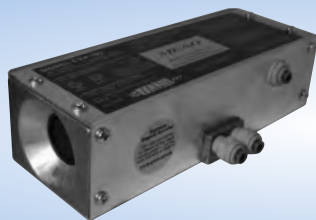


CSV-101LS



CSV-102



CSV-102W



CSV-107

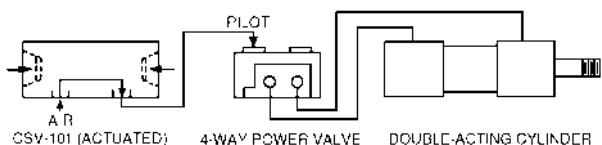
Function of CSV's

Concurrent actuation of the recessed buttons generates a signal. Releasing one or both buttons immediately stops the signal which cannot be re-instituted until both buttons are again actuated concurrently.

Low Stress (LS) models are for high production applications where operator fatigue is a concern. Needing only 6 ounces of force to actuate, LS units ease the stress on worker's hands and wrists and greatly reduce the risk of repetitive motion disorders. Standard models require 18 ounces of force to actuate.

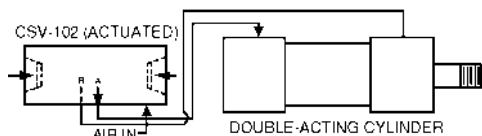
Consult Website for Dimensional Drawings.

CSV-101 & CSV-101LS & CSV-101W



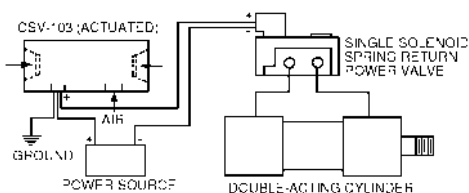
Will actuate any 3 or 4-way air piloted, spring return power valve or small single-acting cylinders. ($C_v = 0.11$)

CSV-102 & CSV-102LS & CSV-102W



Complete power package containing a 4-way power valve ($C_v = 1.00$) for direct actuation of single-acting or double acting air cylinders. Actuation sends a sustained air flow to one cylinder port. Releasing one or both buttons shifts the flow to the other cylinder port. Built-in mufflers reduce sound levels.

CSV-103



Converts an air signal into an electrical signal for actuating solenoid valves or other electrical devices. Concurrent actuation of the recessed buttons produces an electrical output. Releasing one or both buttons stops the output. The CSV-103 will not recycle until both triggers are released and again actuated concurrently. Internal switch rated at 15 amps, 480 VAC. Includes lead wire and receptacle.

For Safer Operation of Your Machinery

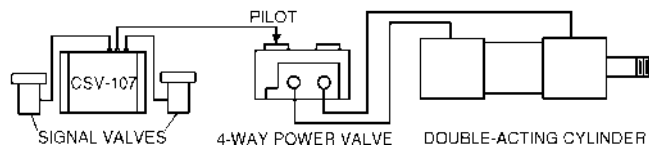
CSVs are two-hand anti-tiedown controls. When used, they provide safer operation of air presses, drill fixtures, clamping fixtures, cylinders, valves, or light assembly equipment. Models 101, 101LS, 102, 102LS and 103 have compact and completely self-contained controls, recessed actuation buttons built in the ends and a universal mount for convenient positioning. For remote two-hand, anti-tiedown operations, see model CSV-107.

CSV-101W & CSV-102W

CSVs are designed for use in a wash-down environment. The units provide the same pilot and power functionality of the CSV-101 and CSV-102, respectively. The logic circuitry is housed in a fiberglass industrial control panel enclosure, providing excellent chemical and corrosion resistance.

CSV-107 Logic Unit Responds To Remote Signals

CSV-107 is designed to actuate 3 or 4-way air piloted, spring return - power valves or directly power smaller single-acting cylinders. A signal can only be initiated by concurrent actuation from two remote inputs. Releasing one or both buttons immediately stops the signal and the unit cannot recycle until both signals are again simultaneously actuated. ($C_v = 0.11$)



The CSV-107 may be purchased alone or with low stress signal valves (LS1, LS2). For information on Mead Low Stress Valves, which are offered with CSV Low Stress (LS) units, please refer to page 25. Push-to-connect fittings included on all pneumatic models.

Specifications

Model No.	Function	Ports (NPTF)
CSV-101	Actuation of Power Valve	(2) 1/8"
CSV-101 W	Actuation of Power Valve	(3) 1/8"
CSV-101 LS	CSV-101, With Low Stress Actuation	(2) 1/8"
CSV-102	Direct Actuation of Air Cylinder or Air Press	(3) 1/4" Fittings
CSV-102 W	Direct Actuation of Air Cylinder or Air Press	(6) 1/4" Fittings
CSV-102 LS	CSV-102, With Low Stress Actuation	(3) 1/4" Fittings
CSV-103	Electrical Actuation of Solenoid Valve	(1) 1/8"
CSV-107	Remote Logic Unit Only	(3) Fittings
CSV-107 LS1	Logic Unit, (2) LTV-PBG Low Stress Valves	Included for 5/32" OD Tube
CSV-107 LS2	Logic Unit, (2) LTV-PBGF Low Stress Valves	

Note: Operating pressure range is 70 - 100 PSI.

Warning: CSV's are intended to operate pneumatic valves and cylinders. They are not meant to be used on full or partial revolution fly wheel presses, power brakes or other similar devices.

Warning: Actuators for CSV-107 must be positioned so that they may not be accidentally tripped or operated in an unsafe manner. Do not actuate CSV-107 with foot operated valves.