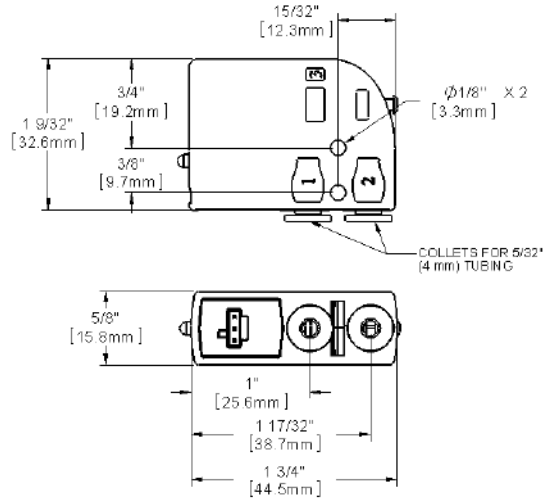


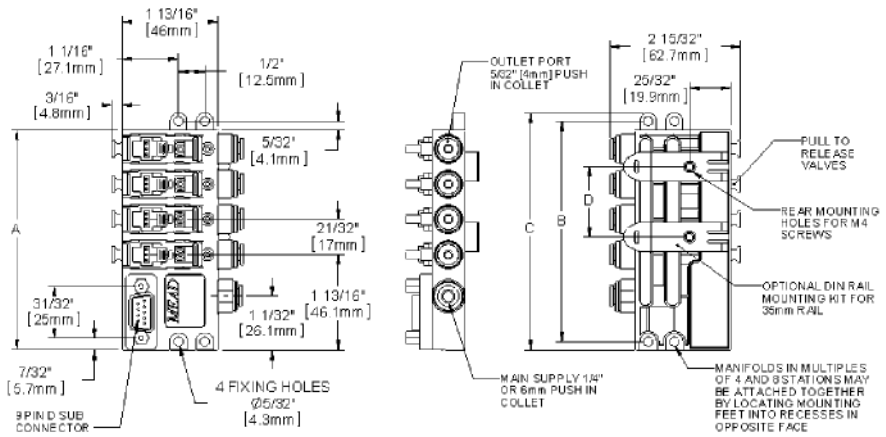
Dimensions



Valves



Manifolds

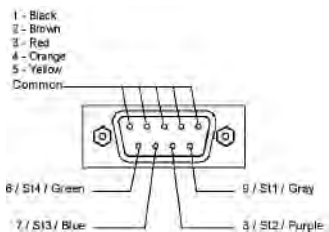


Manifold	A	B	C	D
4	4-3/16	4-3/16	4-1/2	1-11/32
Station	[106.3]	[106.3]	[114.3]	[34]
8	6-7/8	6-7/8	7-13/32	4-1/32
Station	[174.3]	[174.3]	[188.3]	[102]

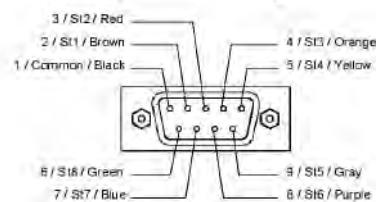
Note: Dimensions in inches [mm]

First numbers are the pin numbers. Center information refers to station. Colors are the wire color of Mead accessories

9-Pin Sub-D Connector
(4 Station Manifold Only)



9-Pin Sub-D Connector
(8 Station Manifold Only)



Specifications—Normally Closed Version

Design : Poppet
Media: Air or Inert Gas
Lubrication: None Required
Filtration: 40 micron
Cycle Life*: 50,000,000 cycles
Orifice Size: A: 0.025" / .65mm
 B: 0.035" / .90mm
 C: 0.055" / 1.40mm

Flow: A: 0.01 C_v
 B: 0.02 C_v
 C: 0.05 C_v

Maximum Pressure: A: 120 PSI / 8.3 Bar
 B: 120 PSI / 8.3 Bar
 C: 30 PSI / 2.1 Bar

Vacuum: To 28 in Hg

Temperature Range: 0°F to 120°F / -18°C to +49°C

Tubing: 5/32" or 4mm

Mounting Holes: 0.156" diameter (2 holes)

Seals: Viton® and Nitrile

Weight: 1.5 oz. (per valve)

Specifications—Normally Open Version

Design : Poppet
Media: Air or Inert Gas
Lubrication: None Required
Filtration: 40 micron
Cycle Life*: 10,000,000 cycles
Orifice Size: B: 0.035" / 0.90mm
 C: 0.055" / 1.40mm

Flow: B: 0.02 C_v
 C: 0.05 C_v

Maximum Pressure: B: 90 PSI / 6.2 Bar
 C: 25 PSI / 1.6 Bar

Vacuum: To 28 in Hg

Temperature Range: 0°F to 120°F / -18°C to +49°C

Tubing: 5/32" or 4mm

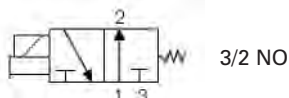
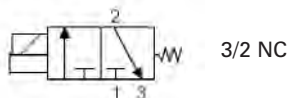
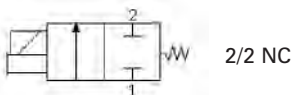
Mounting Holes: 0.156" diameter (2 holes)

Seals: Viton® and Nitrile

Weight: 1.5 oz. (per valve)

* Tested under typical industrial operating conditions; for extended operation at environmental extremes (temperature, etc.) consult Mead.

Valve Symbols



Solenoid Data

Voltage	12DC	24DC	24AC	120 AC
Amps	0.133	0.058	0.058	0.014
Resistance	92Ω	406Ω	406Ω	8350Ω
Initial Power	1.6W	1.4W	1.4W	1.7W
Continuous On	1.3W	1.2W	1.2W	1.5W

Response Time: 10 milliseconds

Molex Connector: UL and CSA Listed

DIN Connector: Protection Class- IP 65 according to DIN 40 050
 Insulation Class- Group C according to VDE 0110
 Conform to DIN 43650 Form C Specifications

Manifold

Common Air Inlet: Built-in, push-in fittings for 1/4" OD or 6mm tubing

Rear Mounting: 2 Holes for M4 screws

DIN Rail Mounting: Attaches to 35mm DIN Rail

Accessories



P2B1



P4M1-x



P5-09SCD



P1SA1



P1SA2



P1Q1

NOTE: (1) pc. is included with each "W" type valve. 24 AWG wire



P4S1

How To Order

Valves:

V 2 B 04 - B Z 0 - T1

Product Category

V = Valve

Family

2 = Isonic® 2000

Orifice Size

A = 0.025" (0.6mm) (only available on NC)

B = 0.035" (0.9mm)

C = 0.055" (1.4mm)

Flow Pattern

02 = 2-Way Normally Closed

03 = 3-Way Normally Open

04 = 3-Way Normally Closed

05 = Vacuum (3-Way) Normally Closed

06 = Vacuum (2-Way) Normally Closed

07 = Vacuum (3-Way) Normally Open

Options

T1 = Tapped Exhaust (10-32)

T2 = Tapped Exhaust (M5x0.80)

LED

0 = No LED (only available with connector Z)

1 = LED standard (not available with connector Z)

Connector

W = Mini Quick Connect (with electronic board) Required for Manifold

X = 8mm Micro DIN (with board)

Connector not included

Y = Flying Lead (with board)

Z = Flying Lead (no board - DC only)

Solenoid Voltage

A = 12 DC

B = 24 DC

D = 24 50/60 Hz AC

F = 120 50/60 Hz AC

Manifolds:

M 2 B 08 1 5

Product Category

M = Manifold

Family

2 = Isonic® 2000

Inlet Tube Size

A = 1/4" OD Tube Collets

B = 6mm OD Tube Collets

Options

0 = No cable or connector

5 = With 5.0m cable and connector

Manifold Accessories

0 = Manifold only

1 = DIN Rail clips mounted on Manifold

2 = Manifold mounted on DIN Rail

Number of Stations

04 = 4 Station

08 = 8 Station

Note: Outlet tube size is 5/32" (4mm) OD Tube Collet

Accessories:

Electrical Connectors

8mm Micro DIN Connector P1D1

8mm Micro DIN Connector (molded, pre-wired). . P1D2

Mini Quick-Connect P1Q1

(includes 39"/ 1m leads)

(includes 18"/ 45cm leads; contact factory for longer lengths)

Manifold Accessories

35mm DIN Mounting Rail P4M1-x (where x = desired number of feet of DIN Rail)

35mm DIN Rail End Stops P4S1 (note: two required per Manifold)

Manifold Blocking Plug P2B1 (for blocking empty Manifold stations)

5.0m Cable and 9 Pin Connector P5-09SDC

Miscellaneous

10-32 Muffler MM-019 (to silence exhaust in 10-32 exhaust port)

Port Adapter P1SA1 (converts 5/32" port to 1/4" barb OD tube)

Port Adapter P1SA2 (converts 5/32" port to 1/4" push-to-connect OD tube)