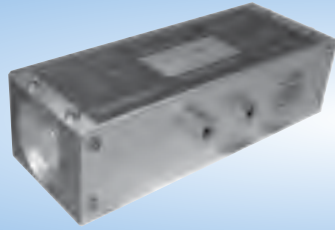
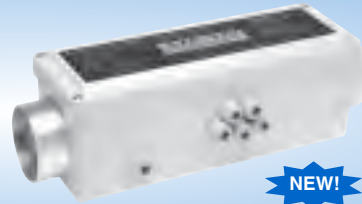


CSV-102



CSV-101LS



CSV-102W



CSV-107

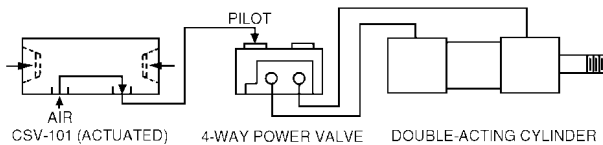
Function of CSV's

Concurrent actuation of the recessed buttons generates a signal. Releasing one or both buttons immediately stops the signal which cannot be re-instituted until both buttons are again actuated concurrently.

Low Stress (LS) models are for high production applications where operator fatigue is a concern. Needing only 6 ounces of force to actuate, LS units ease the stress on worker's hands and wrists and greatly reduce the risk of repetitive motion disorders. Standard models require 18 ounces of force to actuate.

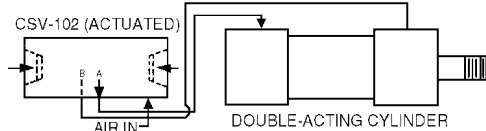
Consult Website for Dimensional Drawings.

CSV-101 & CSV-101LS & CSV-101W



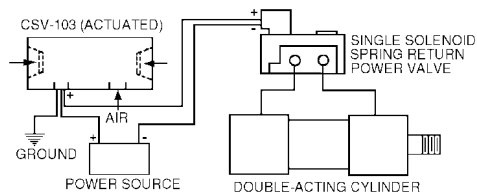
Will actuate any 3 or 4-way air piloted, spring return power valve or small single-acting cylinders. ($C_v = 0.11$)

CSV-102 & CSV-102LS & CSV-102W



Complete power package containing a 4-way power valve ($C_v=1.00$) for direct actuation of single-acting or double acting air cylinders. Actuation sends a sustained air flow to one cylinder port. Releasing one or both buttons shifts the flow to the other cylinder port. Built-in mufflers reduce sound levels.

CSV-103



Converts an air signal into an electrical signal for actuating solenoid valves or other electrical devices. Concurrent actuation of the recessed buttons produces an electrical output. Releasing one or both buttons stops the output. The CSV-103 will not recycle until both triggers are released and again actuated concurrently. Internal switch rated at 15 amps, 480 VAC. Includes lead wire and receptacle.

For Safer Operation of Your Machinery

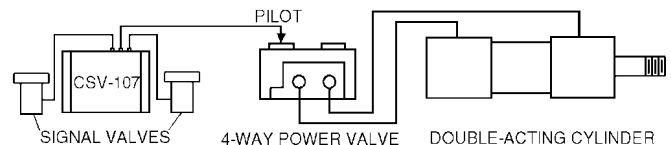
CSVs are two-hand anti-tiedown controls. When used, they provide safer operation of air presses, drill fixtures, clamping fixtures, cylinders, valves, or light assembly equipment. Models 101, 101LS, 102, 102LS and 103 have compact and completely self-contained controls, recessed actuation buttons built in the ends and a universal mount for convenient positioning. For remote two-hand, anti-tiedown operations, see model CSV-107.

CSV-101W & CSV-102W

CSVs are designed for use in a wash-down environment. The units provide the same pilot and power functionality of the CSV-101 and CSV-102, respectively. The logic circuitry is housed in a fiberglass industrial control panel enclosure, providing excellent chemical and corrosion resistance.

CSV-107 Logic Unit Responds To Remote Signals

CSV-107 is designed to actuate 3 or 4-way air piloted, spring return - power valves or directly power smaller single-acting cylinders. A signal can only be initiated by concurrent actuation from two remote inputs. Releasing one or both buttons immediately stops the signal and the unit cannot recycle until both signals are again simultaneously actuated. ($C_v = 0.11$)



The CSV-107 may be purchased alone or with low stress signal valves (LS1, LS2). For information on Mead Low Stress Valves, which are offered with CSV Low Stress (LS) units, please refer to page 23. Push-to-connect fittings included on all pneumatic models.

Specifications

Model No.	Function	Ports (NPTF)
CSV-101	Actuation of Power Valve	(2) 1/8"
CSV-101 W	Actuation of Power Valve	(3) 1/8"
CSV-101 LS	CSV-101, With Low Stress Actuation	(2) 1/8"
CSV-102	Direct Actuation of Air Cylinder or Air Press	(3) 1/4" Fittings
CSV-102 W	Direct Actuation of Air Cylinder or Air Press	(6) 1/4" Fittings
CSV-102 LS	CSV-102, With Low Stress Actuation	(3) 1/4" Fittings
CSV-103	Electrical Actuation of Solenoid Valve	(1) 1/8"
CSV-107	Remote Logic Unit Only	(3) Fittings
CSV-107 LS1	Logic Unit, (2) LTV-PBG Low Stress Valves	Included for
CSV-107 LS2	Logic Unit, (2) LTV-PBGF Low Stress Valves	5/32" OD Tube

Note: Operating pressure range is 70 - 100 PSI.

Warning: CSV's are intended to operate pneumatic valves and cylinders. They are not meant to be used on full or partial revolution fly wheel presses, power brakes or other similar devices.

Warning: Actuators for CSV-107 must be positioned so that they may not be accidentally tripped or operated in an unsafe manner. Do not actuate CSV-107 with foot operated valves.



CSV-111

"No Touch" Units Provide Operator Relief

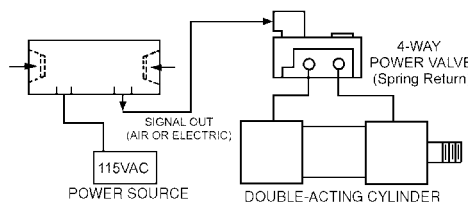
Protect your machine operators from the physical stress due to repetitive operations. These unique devices allow for "no touch" control of electric or pneumatic signals while providing user safety with two-hand no-tiedown actuation.

Zero Force Required

To activate these units, simply interrupt the photo optic beams in the recessed end caps. Units may be ordered with either attached or remote end caps. Remote end caps can be mounted virtually anywhere, including panel mounts.

Two-Hand Safety Control

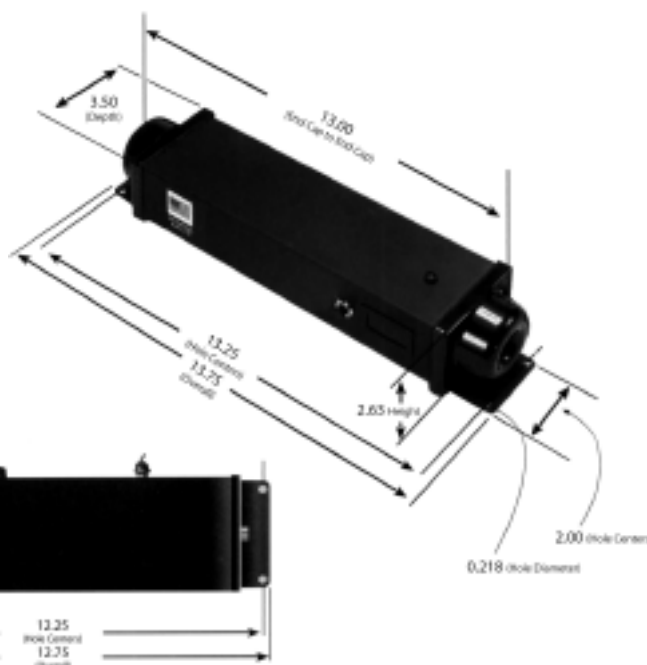
To generate a signal from a "No-Touch" CSV device, simultaneous interruption of two infrared photo beams must occur. Located on opposite ends (standard models), interruption must occur within 1/8 of a second of each other. This interruption must be maintained for the entire cycle or the circuit will reset. At reset, both beams must again be interrupted simultaneously to generate another signal.



Certifications & Standards

No-Touch CSV units have been designed and tested to meet OSHA Standards 1910.212, 1910.217 and ANSI Z8, I-1990. They are further certified to the following:

- ANSI/UL 347
- CSA-C22.2 NO. 14-95
- UL STD. NO. 50
- ANSI/UL 508
- CSA-C22.2 NO. 94-M91



Installs In Minutes

Connect and Go! These units are completely self-contained and pre-packaged controls. Simply connect the output to an appropriate valve or cylinder and plug the power cord to a 120VAC outlet and your control is fully operational. Mounts on any flat surface.

Years of Reliable Service

Every No-Touch unit is fully tested to 5000 cycles! Units are solid state with no mechanical switches or relays to wear out, ensuring years of reliable service in any application.

End cap switches are reliable even in harsh environments. Dust impenetrable and resistant to chemicals and moisture, end caps require no additional gaskets or sealing.

Pneumatic or Electrical Output

While all "No Touch" models utilize a 120VAC power supply, each model provides a different output. CSV-109 (24VDC) and CSV-110 (120VAC) each provide electrical outputs while CSV-111 releases an air signal upon actuation.

Model	Input	Output	Switch Location
CSV-109	120VAC	24VDC (Max. Draw 400 mA)	End Caps
CSV-109R	120VAC	24VDC (Max. Draw 400 mA)	Remote*
CSV-110	120VAC	120VAC (Max. Draw 5A)	End Caps
CSV-110R	120VAC	120VAC (Max. Draw 5A)	Remote*
CSV-111	120VAC	Pneumatic Signal	End Caps
CSV-111R	120VAC	Pneumatic Signal	Remote*

* Remote End Caps include 6' of wire to connect to main unit.

NEW! Wash-down models available. Consult factory.

WARNING!

"No Touch" CSV units are two-hand starting switches. They are not a complete press control. CSV's are intended to operate pneumatic valves and cylinders. They are not meant to be used on full or partial revolution flywheel presses, power brakes or other similar devices; therefore such applications are absolutely prohibited.

Reference

Control Valves

Cylinders

Specialty Valves

Production Devices

Accessories

Index