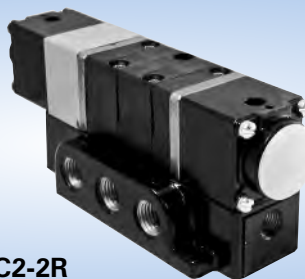




C2-3
Single Air Piloted



C2-2R
3 Position, Double Air Piloted



C2-10H
Hand Valve

Sub-Base Mounted

Mead's Capsula valves work long and hard even when subjected to dirty air. Their unique patented bi-lobed seals are wear compensating, self cleaning, and are completely retained to prevent extrusion.

All models are mounted on a side ported sub-base, 4-way, 5 port. Any valve module may be separated from its base in seconds without disturbing the piping.

Ordering Instructions - State model number and voltage.

C2-4DCD - 120AC

Base Model _____

Voltage _____

General Specifications

Flow: 1/4" Models - $C_v = 0.75$ (45 SCFM at 100 PSI)

1/2" Models - $C_v = 3.17$ (190 SCFM at 100 PSI)

Max. Air Pressure: 120 PSI

Pilot Ports: 1/8" NPT

Filtration: 40 micron (extends valve life)

Lubrication: Required for 1/2" and all 3-position models

Response: 30-40 ms

Temperature: -20°F to +212°F

1/4" Materials: Module (ABS Cylolac) - Spool (Delrin AF®)
Base (Die cast Aluminum) ®Dupont Company

1/2" Materials: Module (Phenolic) - Spool (Aluminum)
Base (Rolled Aluminum)

Model Number	Port Size	Actuator	Return	Description	Min. Pilot Press. (PSI)	Available Voltages	
						DC	AC
C2-1	1/4	Air Pilot	Air Pilot	2-Position, Double Pressure Piloted	20	-	-
C5-1	1/2	Air Pilot	Air Pilot	2-Position, Double Pressure Piloted	20	-	-
C2-2H	1/4	Air Pilot	Spr. Center	3-Position, Double Pressure, Pressure Held In Center	45	-	-
C2-2R	1/4	Air Pilot	Spr. Center	3-Position, Double Pressure, Pressure Released	45	-	-
C2-3	1/4	Air Pilot	Spring	2-Position, Single Pressure Piloted	35	-	-
C5-3	1/2	Air Pilot	Spring	2-Position, Single Pressure Piloted	35	-	-
C2-4DCD	1/4	Solenoid	Spring	2-Position, Single DIN Solenoid	35	12-24	24-120-220-240
C5-4DCD	1/2	Solenoid	Spring	2-Position, Single DIN Solenoid	35	12-24	24-120-220-240
C2-5DCD	1/4	Solenoid	Solenoid	2-Position, Double DIN Solenoid	20	12-24	24-120-220-240
C5-5DCD	1/2	Solenoid	Solenoid	2-Position, Double DIN Solenoid	20	12-24	24-120-220-240
C2-6HDCD	1/4	Solenoid	Spr. Center	3-Position, Double DIN Solenoid, Pressure Held In Center	45	12-24	24-120-220-240
C2-6RDCD	1/4	Solenoid	Spr. Center	3-Position, Double DIN Solenoid, Pressure Released	45	12-24	24-120-220-240
C2-7	1/4	Hand Lever	Spring	2-Position Lever, Spring Return	-	-	-
C5-7	1/2	Hand Lever	Spring	2-Position Lever, Spring Return	-	-	-
C2-8	1/4	Hand Lever	Hand Lever	2-Position Lever, Friction Held	-	-	-
C5-8	1/2	Hand Lever	Hand Lever	2-Position Lever, Friction Held	-	-	-
C2-9H	1/4	Hand Lever	Spr. Center	3-Position Lever, Pressure Held In Center	-	-	-
C2-9R	1/4	Hand Lever	Spr. Center	3-Position Lever, Pressure Released in Center	-	-	-
C2-10H	1/4	Hand Lever	Detented	3-Position Lever, Pressure Held In Center	-	-	-
C2-10R	1/4	Hand Lever	Detented	3-Position Lever, Pressure Released In Center	-	-	-

* Explosion proof models available.

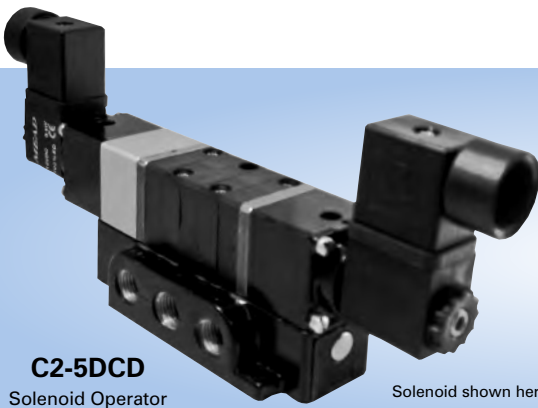
* Connector not included on solenoid models; see below.

DIN Solenoid Connectors

Electrically actuated Capsula valves utilize a 12mm industrial B-type DIN type solenoid. DIN solenoids feature a totally encapsulated coil with 3 prongs, allowing fast and easy connections. DIN connectors are ordered separately. Mead offers 3 types of DIN connectors to facilitate connections to the solenoid. A full description of these connectors can be found on page 68.

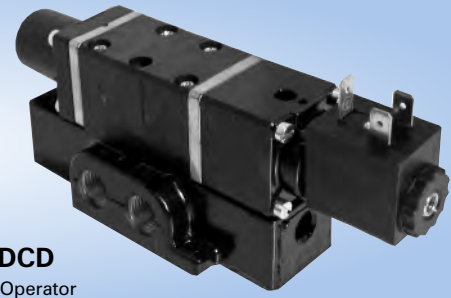


Model PVD1



C2-5DCD
Solenoid Operator

Solenoid shown here with (2) connectors, PVD1 (sold separately)

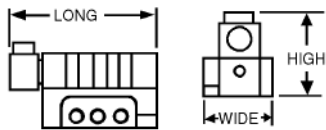


C2-4DCD
Solenoid Operator

Dimensions

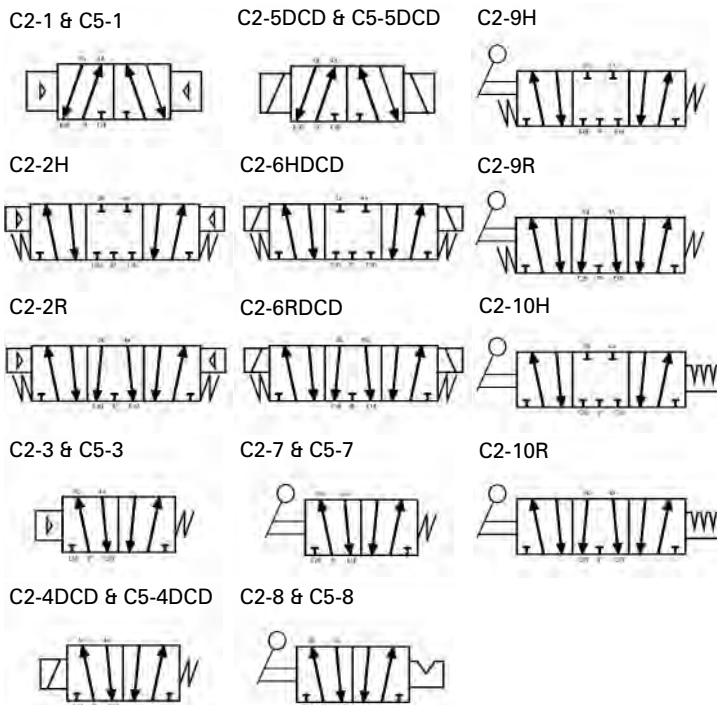
2 mounting holes per valve:

1/4" valves - 7/32" diameter
1/2" valves - 9/32" diameter



Model	Long	Wide	High
C2-1	4 7/32	2	2 1/4
C5-1	7 7/16	3	3 1/4
C2-2H	7 1/32	2	2 1/4
C2-2R	7 1/32	2	2 1/4
C2-3	4 21/32	2	2 1/4
C5-3	7 31/32	3	3 1/4
C2-4DCD	6 1/2	2	2 1/4
C5-4DCD	10 9/32	3	3 1/8
C2-5DCD	7 3/4	2	3 9/16
C5-5DCD	10 13/16	3	3 1/8
C2-6HDCD	10 25/32	2	3 9/16
C2-6RDCD	10 25/32	2	3 9/16
C2-7	5 3/8	2	5 5/8
C5-7	9 3/16	3	8 7/8
C2-8	5 7/8	2	5 5/8
C5-8	6 1/4	3	8 7/8
C2-9H	6 1/4	2	5 5/8
C2-9R	6 1/4	2	8 7/8
C2-10H	6 1/4	2	5 5/8
C2-10R	6 1/4	2	8 7/8

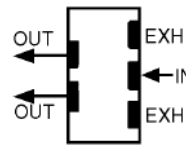
Valve Symbols



Actuators

The Capsula line offers a wide variety of actuator styles including single & double air piloting, hand lever operators, and single & double solenoid piloting.

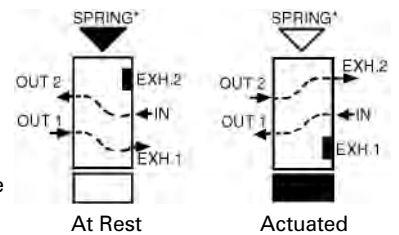
Flow Patterns



Capsula valves are 4-way, 5 ported directional control valves. This means that they have one inlet, 2 pressure outputs, and 2 exhaust ports. Dual exhausts facilitate individual flow control of each output port and allow dual pressure and diverter hookups.

Two Position Models

Whenever the inlet is charged, flow will occur at one output port or the other.

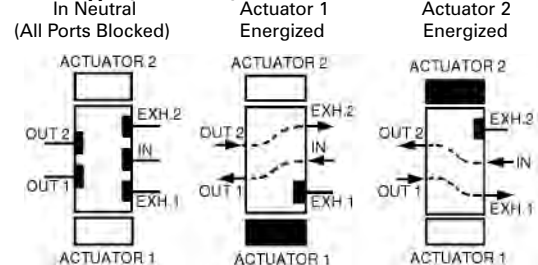


*On double solenoid or double air piloted models, the second actuator replaces the spring.

Three Position Models

Whenever the inlet is charged and neither actuator is signalled, both output ports will either be blocked (pressure held) or exhausted (pressure released). Pressure held models allow a cyl. to be "inched" along. Pressure released models allow the cylinder piston to float in neutral.

Pressure Held Type (H Models)



Pressure Release Type (R Models)

