

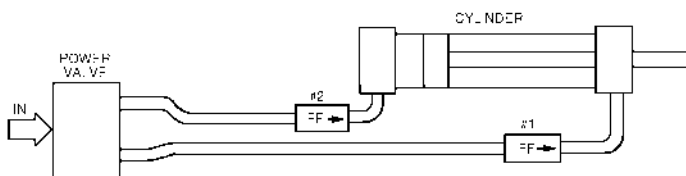
Precise-Metering Flow Control

Fine tune the speed of your cylinders with precise-metering Dyla-Trol® valves. No other flow control provides such accurate control of cylinder motion.

For best results locate flow control valves right on the cylinder ports with the "free flow" direction pointing toward the cylinder. Air exhausting from the cylinder will then be metered. Controlling air entering the cylinder produces a less smooth motion.

Note: While Dyla-Trol® are most often used to adjust cylinder speed, they are ideal for use wherever air or oil flow is to be controlled.

TYPICAL CYLINDER HOOK-UP



In this circuit, flow control #1 controls the outward movement of the cylinder rod and flow control #2 controls the return speed.

Compact Inline Design

The convenient inline design makes flow setting and plumbing easy. The hexagonal adjusting sleeve, which may be turned by hand, is only slightly greater in diameter than the tubing and has no protrusions to impair hook-up.

Each Valve Factory "Tuned" for Accuracy

To accomplish the perfect orifice concentricity that is necessary to produce the high performance of Dyla-Trols, each sleeve and body set is permanently mated during production.

Temperature Range

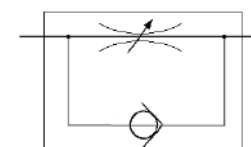
-40°F to +250°F

Control

Models MF1-12, MF1-25, MF1-37 and MF1-50 are controlled flow in one direction, free flow in the other.

MF2-12, MF2-25, MF2-37 or MF2-50 are controlled flow in both directions.

Symbols



MF1 Style



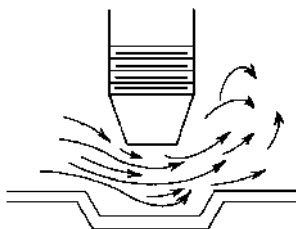
MF2 Style



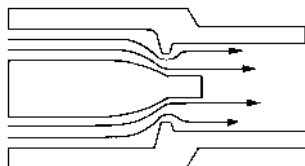
Smooth Laminar Flow

The unique construction of Dyla-Trol® assures a perfectly tapering flow. This unprecedented smoothness is made possible by the "iris" type orifice mechanism. Where needle-type flow controls generate turbulence as they close, Dyla-Trol® maintains an even 360° laminar flow regardless of the setting.

Needle Valve



Dyla-Trol Valve



High Repeatability

The fast-acting check mechanism in each free flow model responds to very slight changes in pressure. This guarantees fast resetting and dependable repeatability with each cycle.

Models and Specifications

Flow Direction	MF1-02	MF1-04	MF1-06	MF1-08	MF1-12	MF1-25	MF1-37	MF1-50
Max. Pressure in PSI	250 Air 250 Oil	250 Air 250 Oil	250 Air 250 Oil	250 Air 250 Oil	250 Air 1000 Oil	250 Air 1000 Oil	250 Air 1000 Oil	250 Air 1000 Oil
Max. Flow @ 100 PSI	8 CFM C _v = 0.1	7 CFM C _v = 0.1	7 CFM C _v = 0.1	7 CFM C _v = 0.1	47 CFM C _v = 0.8	66 CFM C _v = 1.2	149 CFM C _v = 2.6	173 CFM C _v = 3.1
Body	Brass	Brass	Brass	Brass	Aluminum	Aluminum	Aluminum	Aluminum
Length	1 1/4"	2 1/2"	2 7/16"	2 1/2"	2"	2 1/2"	2 7/8"	3 1/4"

Reference

Control Valves

Cylinders

Specialty Valves

Production Devices

Accessories

Index