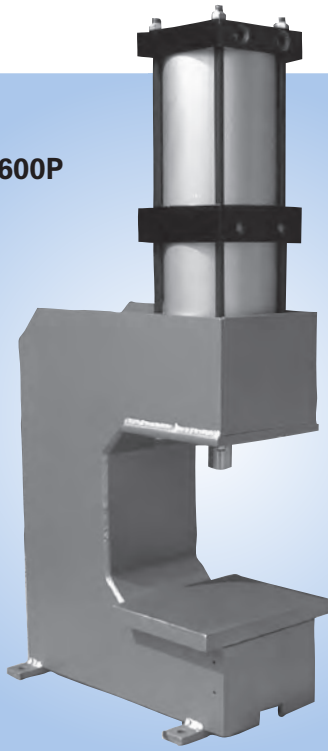


HP-600P



Mead's latest press utilizes multiple stages to achieve a dramatically increased output force. A standard shop air input (110 PSI) can achieve a push output force of up to 6057 lbs. The standard model has two stages, but upon request Mead can provide more stages which means higher output force at an even lower input force.

Economical air powered presses reduce production costs by automating crimping, heat sealing, bending, forming, pressing, swaging, riveting and burnishing operations. Easy hook-up. Just attach to your shop air supply. No wiring, pumps, or motors needed.

Operating Specifications

Temperature Range: -40°F to +250°F (to +400°F on request)

Lubrication: For maximum cylinder life, non-detergent petroleum based oil is recommended. Non-lube seals available.

Filtration: Standard 40 micron filter for maximum life.

Maximum Pressure: 110psi

Maximum Output Force: 6057lbs

Thrust Multiplier: 55*

*To determine thrust at other inlet pressure, multiply factor by desired pressure

Ordering Information

Model #	Description
HP-600M	Press stand only.
HP-600P	Cylinder mounted on stand
HP-600C	Complete press with 2 hand controls (not piped).

Specify:

Throat dimension "T" Min=1/2" Max=9"

Stroke dimension "S" Min=1/4" Max=9"

Sample Part

HP-600P G2 - T8.00 - S4.00

Model

Stages

Stroke

Throat

Contact Mead to consult for more than the standard two stages.

NOTE: Stroke cannot exceed throat.

Available Cylinder Options:

CR = Cushion Rear
IPR = Inter-Pilot Rear
MP = Magnetic Piston

Consult Factory for Other Options
Consult Website for Press Hook-ups

Materials

Rod Bearing: Teflon-impregnated, hardcoated aluminum

Heads: Machined from solid aluminum bar; black anodized

Tubes: Aluminum hard anodized to 60 Rc

Piston: Solid high alloy aluminum

Piston Rod: High tensile ground and polished hard chrome plated steel

Piston and Rod Seals: Wear compensating Buna N vee rings. Self-lubricating seals also available (see Option NL).

Tube Seals: Buna N O-rings

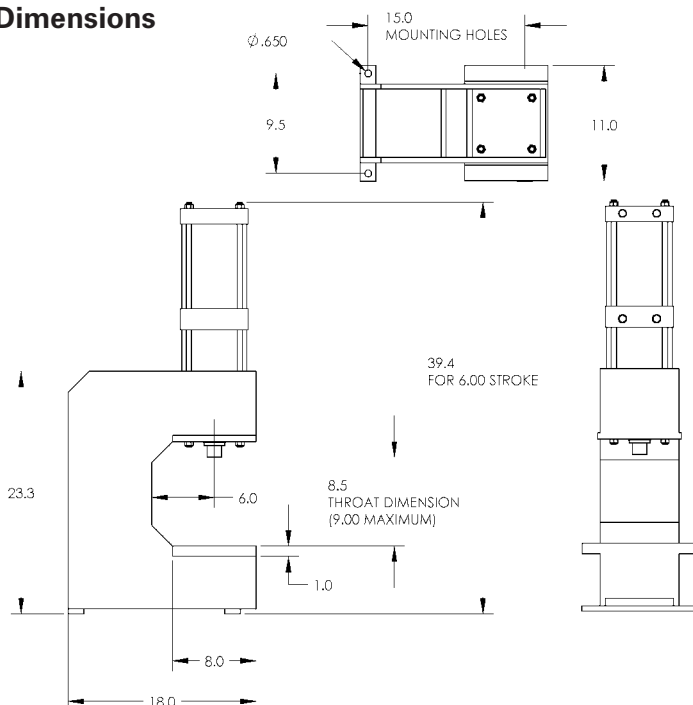
Rod Wiper: Dupont Teflon®

Tie Rods: High tensile steel torqued to allow for flexure.

Stand: Welded steel frame.

Weight: 250 lbs.

Dimensions



Note: For each inch of stroke overall height increases by 2"